

JJB Sports



When it comes to the look of their stores, JJB Sports go to greater lengths than most to remain at the forefront of modern retailing.

With a nationwide chain of 420 stores - and a European presence in Amsterdam and Rotterdam - Lancashire-based JJB Sports have gone from strength to strength since former Blackburn Rovers footballer David Whelan started the company in 1976.

Today's approach follows a proven formula of pro-active marketing which focuses on a wide range of value-for-money sports merchandise. To keep pace with this dynamic approach makes serious demands on the company's interior design policy.

JJB Sports

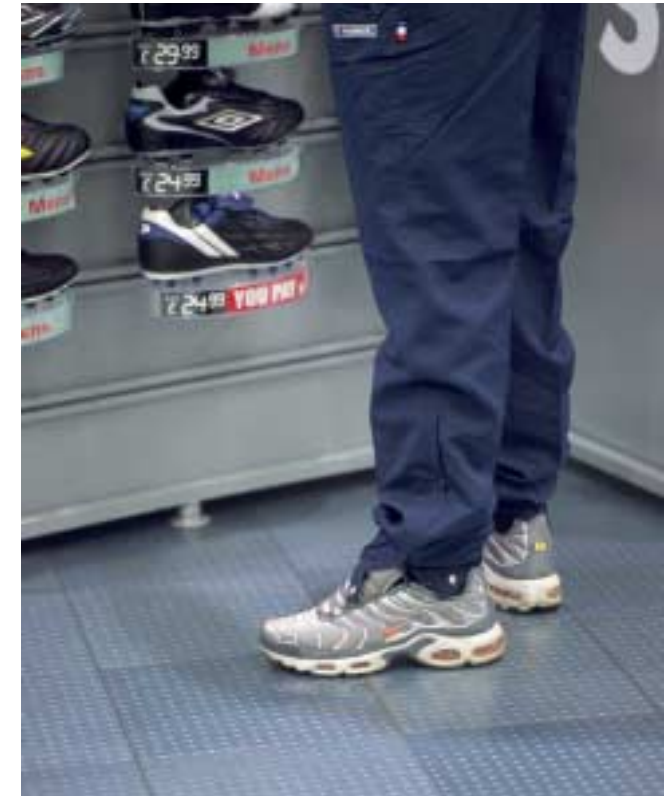


With a view to updating its well-established image and creating a new and innovative store design format, the company's Property Department recently trialled a new concept at the Walsall store. This proved to be very successful

and was subsequently rolled out across more than thirty stores in the UK, Ireland and Holland.

A fresh and modern lilac, blue and silver theme was used in the textiles and shoe areas, whilst a more traditional beech finish was reserved for the golf department. The bold saw-tooth wall design in the (textiles and) shoe area was given further definition by perimeter merchandise boards where colour-coded backboards indicate whether the products are for kids, ladies or men.

Additional features such as the bulkhead, downlighters and freestanding benches lend a distinctive look to the shoe area which was further enhanced by the use of Amtico flooring, as Associate Director Tom Ward pointed out:



"We first saw Amtico at the NEC show and were impressed by its interesting three-dimensional appearance," said Tom. "It was used as part of the overall concept at our Walsall store and it goes superbly with the other fittings."

JJB Sports



"Pressplate Zinc Stud tiles edged with Meteor Silver stripping is laid with a sweeping curved edge which differentiates the shoe area very effectively and creates a fresh, contemporary look.

"We've been so impressed with the effect created by Pressplate Zinc Stud," Tom added, "that we're using it to define circulation areas and create a modern feel at the health and leisure clubs we run at bigger JJB sites."

Design: In- House

Amtico Products: DP38 Pressplate Zinc Stud and MP38 Meteor Silver stripping